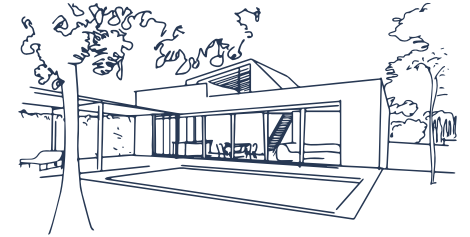
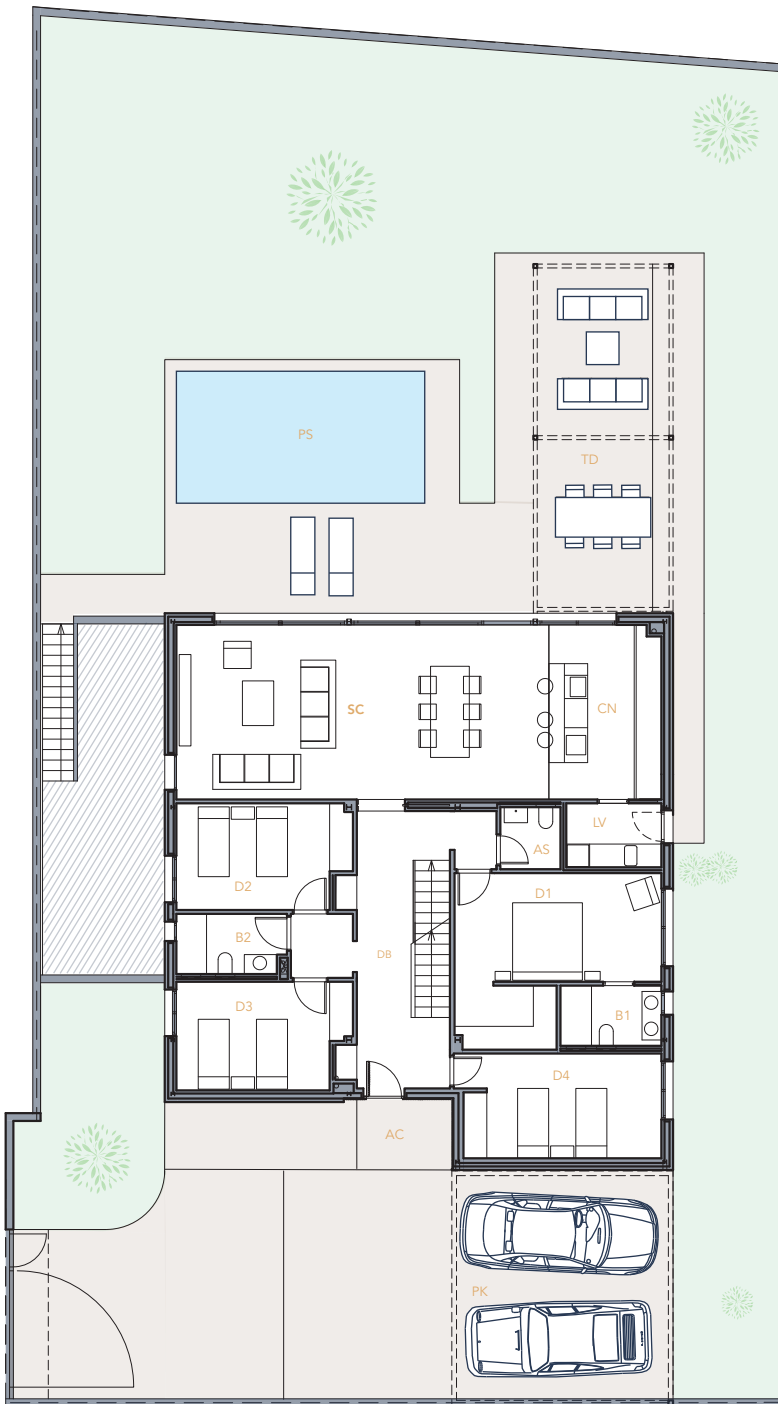


 **aurum**

HOUSE 03

Telus



GRUOUND FLOOR

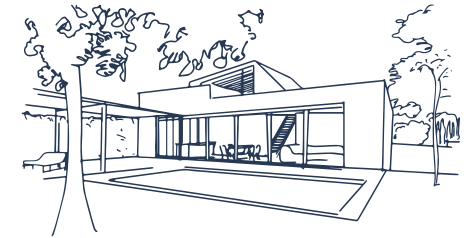
total built surface	207,20 m²
AC covered access	02,60 m ²
DB hall	26,05 m ²
AS bathroom	02,86 m ²
SC living room	49,36 m ²
CN kitchen	14,80 m ²
LV laundry	04,63 m ²
TD pool terrace	32,20 m ²
PS pool	21,76 m ²
D1 bedroom 01	22,05 m ²
B1 bathroom 01	04,63 m ²
D2 bedroom 02	13,54 m ²
B2 bathroom 02	04,91 m ²
D3 bedroom 03	13,63 m ²
D4 bedroom 04	15,94 m ²
PK parking	33,50 m ²

TOTAL SURFACE

plot surface	663,00 m²
total built surface	445,18 m²
indoor built area	262,32 m ²
outdoor built area	182,86 m ²
free garden surface	307,71 m²

**DETACHED SINGLE FAMILY HOUSE WITH POOL
IN CAMPOLIVAR URBANIZATION(GODELLA)**

This information and graphic documentation is indicative and provisional in nature, and is subject to possible modifications derived from the final technical project and its execution due to commercial, technical, administrative or any other needs. The furniture, grass, trees, plants, etc. as well as all the ornamental elements appear exclusively for decorative purposes and are not delivered with the home nor do they have a contractual nature for the parties.



FIRST FLOOR

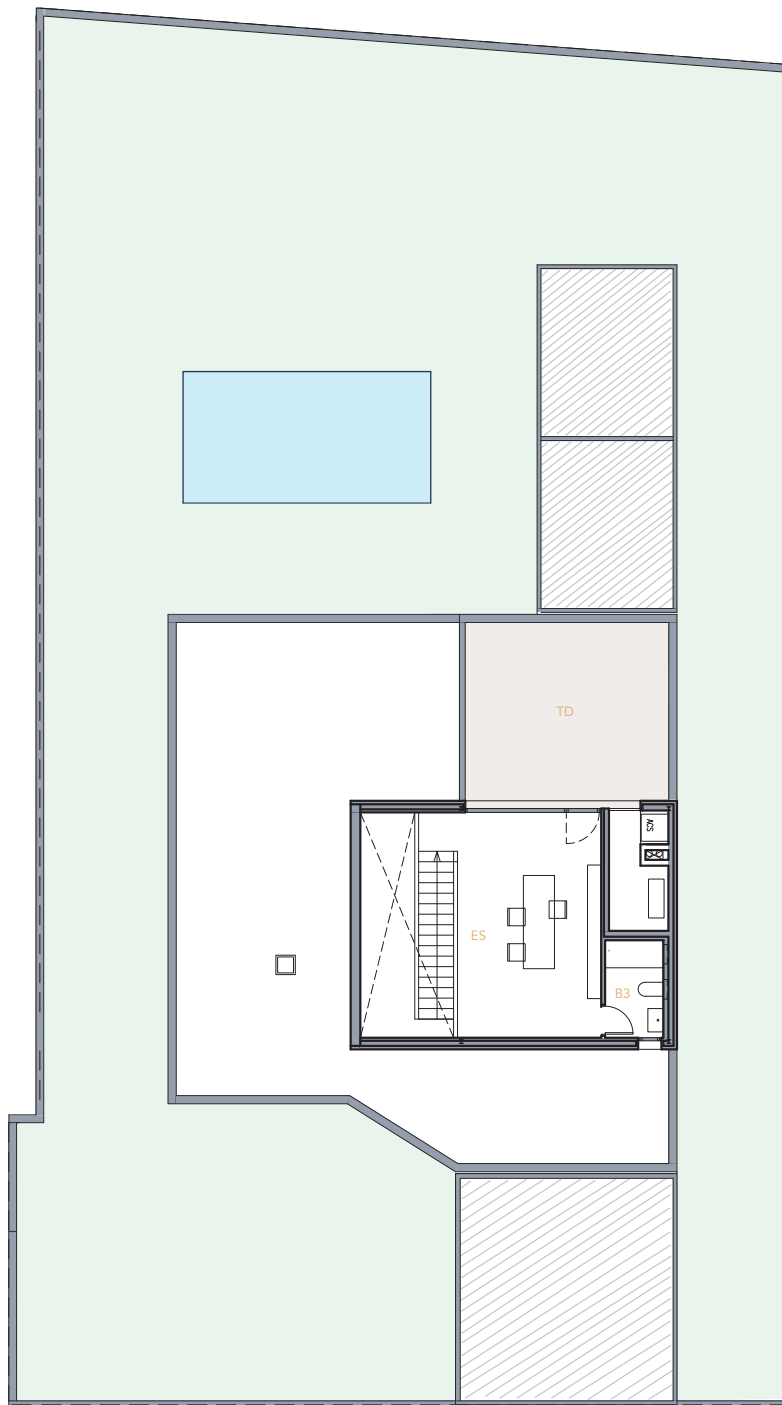
total built surface	45,26 m ²
ES studio	30,37 m ²
B3 bathroom 3	05,07 m ²
TD terrace	19,65 m ²

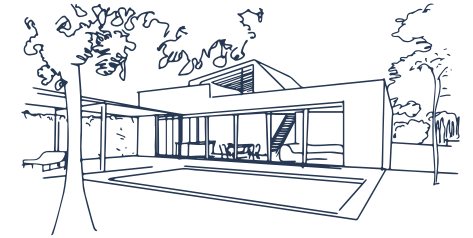
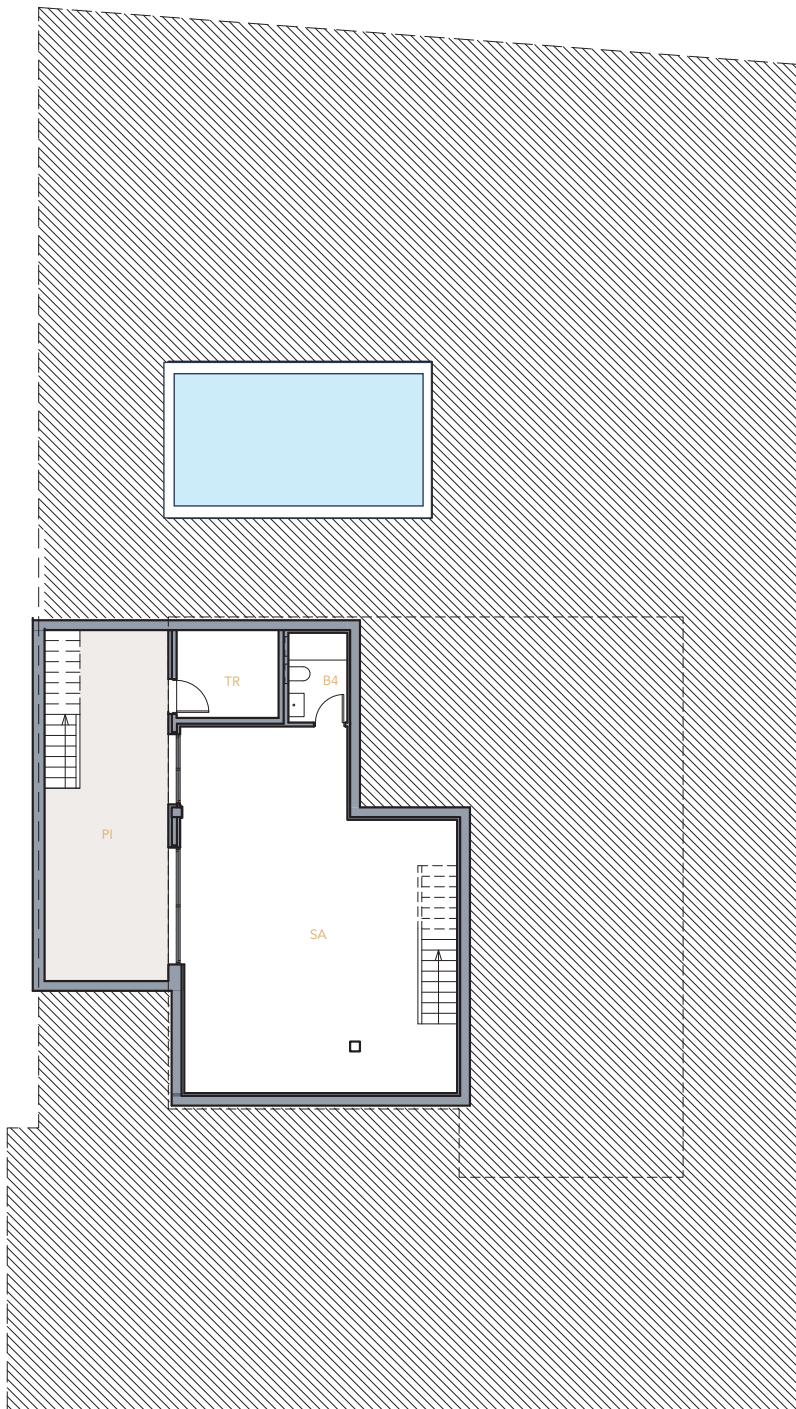
TOTAL SURFACES

plot surface	663,00 m ²
total built surface	445,18 m ²
indoor built area	262,32 m ²
outdoor built area	182,86 m ²
free garden surface	307,71 m ²

DETACHED SINGLE FAMILY HOUSE WITH POOL IN CAMPOLIVAR URBANIZATION(GODELLA)

This information and graphic documentation is indicative and provisional in nature, and is subject to possible modifications derived from the final technical project and its execution due to commercial, technical, administrative or any other needs. The furniture, grass, trees, plants, etc. as well as all the ornamental elements appear exclusively for decorative purposes and are not delivered with the home nor do they have a contractual nature for the parties.





BASEMENT*

total built surface	96,83 m ²
SA room	71,44 m ²
B4 bathroom 4	04,17 m ²
TR storage room	07,07 m ²
PI english patio	28,30 m ²

TOTAL SURFACES (BASEMENT OPTION)

plot surface	663,00 m²
total built surface	542,01 m²
indoor built area	262,32 m ²
outdoor built area	182,86 m ²
basement built area	96,83 m ²
free garden surface	279,41 m²

*Basement is an option, not included on the house price.

DETACHED SINGLE FAMILY HOUSE WITH POOL IN CAMPOLIVAR URBANIZATION(GODELLA)

This information and graphic documentation is indicative and provisional in nature, and is subject to possible modifications derived from the final technical project and its execution due to commercial, technical, administrative or any other needs. The furniture, grass, trees, plants, etc. as well as all the ornamental elements appear exclusively for decorative purposes and are not delivered with the home nor do they have a contractual nature for the parties.