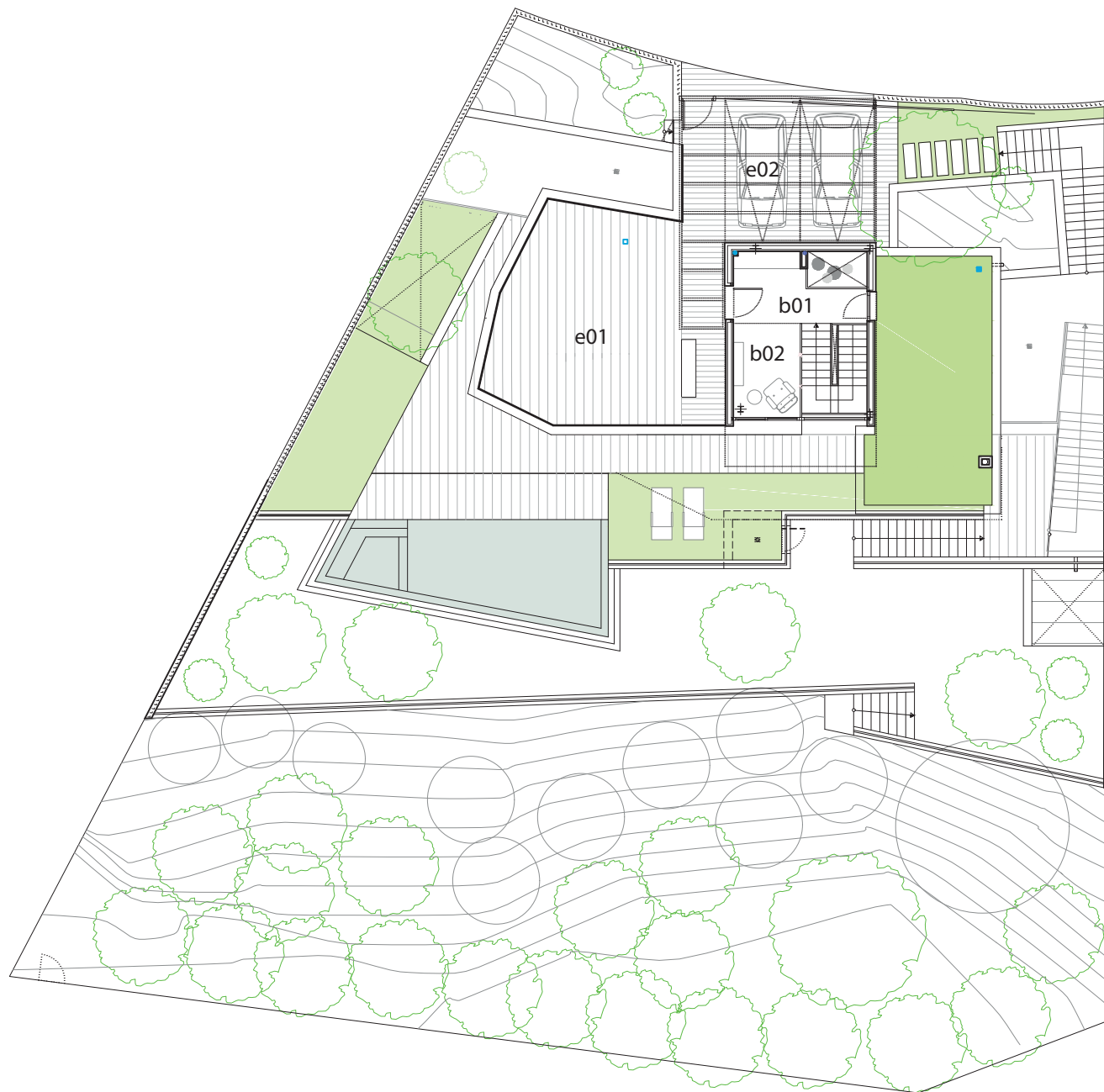


ALTEA HILLS HA|02  
HABITAE



ALTEA | HA 02  
HABITAE



ACCESS FLOOR

<b>total built area</b>	19,38 m <sup>2</sup>
b01 hall	10,25 m <sup>2</sup>
b02 library	09,13 m <sup>2</sup>

OUTDOOR

e01 solarium	55,00 m <sup>2</sup>
e02 parking area	36,07 m <sup>2</sup>

TOTAL SURFACE

<b>plot area</b>	1010,00 m <sup>2</sup>
<b>total built area</b>	741,74 m <sup>2</sup>
total built living area	277,52 m <sup>2</sup>
total built outdoor area	464,22 m <sup>2</sup>

DETACHED FAMILY HOUSE WITH INDIVIDUAL POOL IN  
ALTEA HILLS DEVELOPMENT HA|02 (ALTEA)

The present information and all graphic documentation are intended as a guide only and are subject to possible modifications for technical, legal, construction or commercial requirements. All furniture, grass, trees, plants, and so on, as any other ornamental figure is proposed as decorative element, they will not.

ALTEA | HA 02  
HABITAE

FIRST FLOOR

<b>total built area</b>	137,64 m <sup>2</sup>
b03 entry	11,13 m <sup>2</sup>
b04 hall	08,45 m <sup>2</sup>
b05 kitchen - living room	43,40 m <sup>2</sup>
b06 bedroom 1	13,09 m <sup>2</sup>
b07 bedroom 2	12,47 m <sup>2</sup>
b08 master suite	16,89 m <sup>2</sup>
b09 master suite bathroom	09,62 m <sup>2</sup>
b10 laundry	05,17 m <sup>2</sup>
b11 bathroom 2	05,72 m <sup>2</sup>
b12 toilet	02,89 m <sup>2</sup>
b13 porch	08,79 m <sup>2</sup>

OUTDOOR

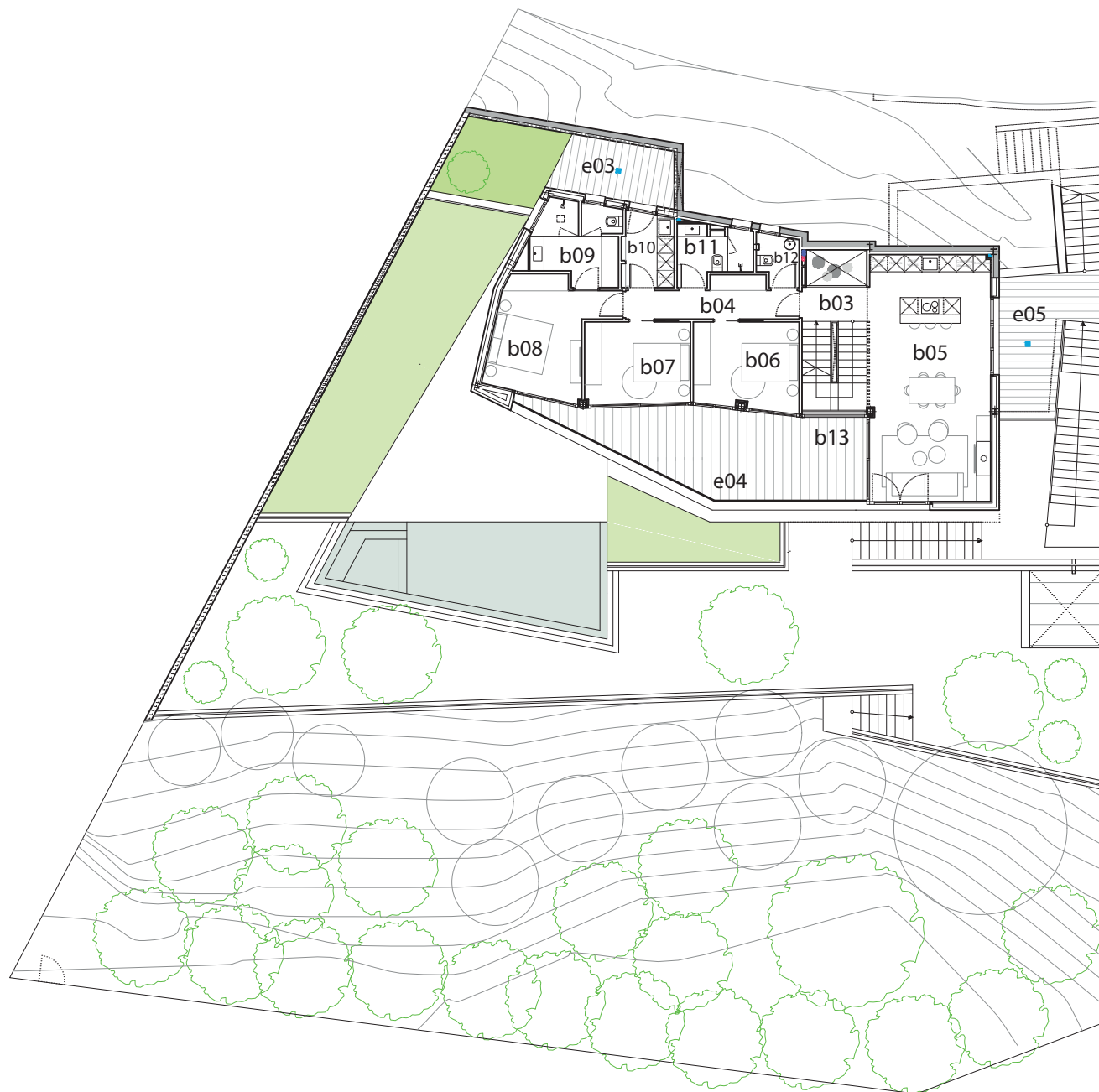
e03 backyard	08,20 m <sup>2</sup>
e04 terrace	27,18 m <sup>2</sup>
e05 side terrace	11,79 m <sup>2</sup>

TOTAL SURFACE

<b>plot area</b>	1010,00 m <sup>2</sup>
<b>total built area</b>	741,74 m <sup>2</sup>
total built living area	277,52 m <sup>2</sup>
total built outdoor area	464,22 m <sup>2</sup>

DETACHED FAMILY HOUSE WITH INDIVIDUAL POOL IN  
ALTEA HILLS DEVELOPMENT HA|02 (ALTEA)

The present information and all graphic documentation are intended as a guide only and are subject to possible modifications for technical, legal, construction or commercial requirements. All furniture, grass, trees, plants, and so on, as any other ornamental figure is proposed as decorative element, they will not.



ALTEA | HA 02

# HABITAE

## GROUND FLOOR

<b>total built area</b>	115,32 m <sup>2</sup>
b13 entry	15,18 m <sup>2</sup>
b14 bedroom 4	15,64 m <sup>2</sup>
b15 bathroom 4	11,38 m <sup>2</sup>
b16 gym	12,53 m <sup>2</sup>
b17 bathroom 5	04,30 m <sup>2</sup>
b18 engine room	03,69 m <sup>2</sup>
b19 porch	54,97 m <sup>2</sup>

## OUTDOOR

e06 terrace	165,87 m <sup>2</sup>
e07 swimming pool	26,21 m <sup>2</sup>
e08 lower garden	133,90 m <sup>2</sup>
e09 pool purifier	2,81 m <sup>2</sup>

## TOTAL SURFACE

<b>plot area</b>	1010,00 m <sup>2</sup>
<b>total built area</b>	741,74 m <sup>2</sup>
total built living area	277,52 m <sup>2</sup>
total built outdoor area	464,22 m <sup>2</sup>

DETACHED FAMILY HOUSE WITH INDIVIDUAL POOL IN  
ALTEA HILLS DEVELOPMENT HA|02 (ALTEA)

The present information and all graphic documentation are intended as a guide only and are subject to possible modifications for technical, legal, construction or commercial requirements. All furniture, grass, trees, plants, and so on, as any other ornamental figure is proposed as decorative element, they will not.

